



DESTINATION GUIDE



THE
COUNTRYSIDE
OF PHILADELPHIA

CountrysidePHL.com



English



DISCOVER PHILADELPHIA

Extend your stay and discover Philadelphia's attractions and more. Scan here for itinerary suggestions.



PENNSYLVANIA

NEW YORK

MASSACHUSETTS

CONNECTICUT

RHODE ISLAND

Hershey/
Harrisburg
136km

Gettysburg
189km

Lancaster
93km

Poconos
160km

LaGuardia
New York City 182km
Newark Liberty Int'l
John F. Kennedy Int'l

Philadelphia
43km
Philadelphia Int'l

MARYLAND

NEW JERSEY

Baltimore
125km

Dulles Int'l
Washington, D.C.
212km

Ronald Reagan
Washington Nat'l

Baltimore/
Washington Int'l

Hidden Gems

CENTRAL LOCATION

Just outside of Philadelphia, a landscape of rolling hills, vibrant towns, and world-class wonders invites visitors to slow down and explore. Escape to a tranquil region defined by its lush gardens, fascinating histories, distinctive shopping and local charms.

An enchanting experience awaits in The Countryside of Philadelphia.

VIRGINIA



GARDENS



HISTORY



SHOPPING



OUTDOOR ADVENTURES

gan Int'l
Boston
525km

MODE
LAND



THE COUNTRYSIDE OF PHILADELPHIA

CountrysidePHL.com

A Perfect Addition to **EAST COAST ITINERARIES**

The Countryside of Philadelphia is nestled between New York City and Washington D.C., making it a perfect addition to East Coast itineraries. Lush landscapes greet visitors minutes outside of Philadelphia.

Transportation

The Philadelphia International Airport is less than an hour drive to The Countryside. Rail services connect area towns and provide direct access to and from Philadelphia. For an immersive experience, rent a car and explore; The Countryside's scenic backroads are a destination of their own.



Amtrak: Keystone, Pennsylvanian



SEPTA Regional Rail: R5 and R6 Lines



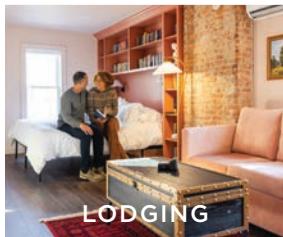
UBER/Ride Share

Top Producing Receptive Companies

- American Tours International
- Hotelbeds
- TourMappers
- GetYourGuide



CULINARY
EXPERIENCES



LODGING



Explore

THE COUNTRYSIDE

Revel in revolutionary history, stroll the gardens of America's Garden Capital, and enjoy unique culinary experiences— from farm-fresh creations to local libations. Shop tax-free for clothing and shoes at the King of Prussia Mall, or meander buzzing downtowns lined with local charms.

The Countryside's diverse array of experiences invites you to create a journey that is uniquely your own.

WELCOME



AMERICA'S GARDEN CAPITAL

The Countryside of Philadelphia is the heart of America's Garden Capital. Enjoy vibrant blooms year-round in world-renowned conservatories and roam breathtaking natural landscapes.

HISTORY

Dig into The Countryside's historic roots, survived by revolutionary landmarks, grand Gilded-Age estates, and iconic artworks.

SHOPPING

Enjoy tax-free shopping on clothing and shoes, from designer brands at the sprawling King of Prussia Mall to downtown boutiques with local finds.



OUTDOOR ADVENTURES

Explore expansive state parks, scenic trails, and tranquil waterways. Bike, hike, paddle, ride horseback, or enjoy a birds-eye view from a hot air balloon.

CULINARY EXPERIENCES

Dine in delicious restaurants and sample the region's homegrown and hand-crafted delicacies, from chocolates and cheeses to beer, wine, and mushrooms.



EVENTS

Plan your trip around a lively calendar of seasonal events, festivals, and unique experiences throughout Philadelphia and The Countryside.

ACCOMMODATIONS

Relax and recharge in your choice of convenient accommodations, from quaint bed & breakfasts to trusted national hotel brands. Enjoy free parking at most lodging properties.



The Countryside of Philadelphia is the heart of **America's Garden Capital**, home to the highest concentration of the 35 public gardens in 30 miles of Greater Philadelphia. From meticulously curated displays of ornamental blooms to naturalistic landscapes dedicated to native plant conservation, The Countryside is always in bloom.

World-renowned **Longwood Gardens** features acres of outdoor gardens, breathtaking seasonal displays in two indoor conservatories, and the most significant collection of fountains in North America.

Longwood Reimagined, a stunning 17-acre expansion, welcomed breathtaking new spaces: the 32,000 square foot West Conservatory, a crystal palace seemingly floating on water; a relocated, glass-enclosed Cascade Garden; and an outdoor Bonsai Courtyard. Longwood's 1906 restaurant is a true culinary gem, offering a locally-sourced fine dining experience that overlooks the Main Fountain Garden.

Longwood's summer **Festival of Fountains** is a captivating experience, featuring iconic performances in the Main Fountain Garden: 1,719 glowing jets soar up to 175 feet and dance in time to beloved musical themes, from ABBA to Taylor Swift tracks.

On the National Register of Historic Places, **Morris Arboretum** boasts an enchanting collection of over 12,000 plants—some the largest of their kind in North America, and others exceedingly rare.



GARDENS

The du Pont family shared a passion for horticulture, preservation, and architecture, survived by grandiose mansions and magnificent gardens throughout The Countryside. Each property offers a glimpse into American history, from the Gilded Age to the Roaring Twenties.

Hagley Museum & Library is the original gunpowder works and ancestral home of the du Pont family. Visitors can explore the historic home and garden, restored mills, and the *Nation of Inventors* exhibition exploring American innovation from the 1790s to 1800s.

The former 175-room estate of Henry Francis du Pont, **Winterthur Museum, Garden & Library** features the most significant collection of American artifacts, surrounded by 1,000 acres of rolling hills, streams, meadows and forests.

A.I. du Pont's **Nemours Estate** features some of the finest examples of French-inspired formal gardens in the United States; the mansion is furnished with timeless treasures, just as it was when he lived there.

In contrast, the natural beauty of The Countryside is celebrated in tranquil, tree-tunneled arboretums and naturalistic gardens. Another du Pont family property, **Mt. Cuba Center** features expansive woodlands and preservation gardens.

Chanticleer: A Pleasure Garden invites visitors to wander 48 acres of imaginative landscapes, while **Jenkins Arboretum** is renowned for its vibrant azaleas that color winding paths each spring. **Stoneleigh: A Natural Garden** spans 42 acres of towering trees, serene woodlands, and tranquil garden beds.





National Memorial Arch

HISTORY



Muhlenberg Brigade

2026 marks the 250th anniversary of the founding of The United States of America. Discover historic treasures in The Countryside of Philadelphia, minutes from the birthplace of American Independence.

The region played a noteworthy role in the Revolutionary War; the Brandywine Battlefield saw victory go to the British in the largest engagement of the Revolution, while Valley Forge was the site of the 1777-1778 winter encampment of the Continental Army, which emerged a rededicated fighting force.

Valley Forge National Historical Park preserves the story of the Continental Army, where soldiers endured harsh conditions while shaping the future of the United States. Visitors can explore replica soldier huts, colonial-era buildings, and monuments like the towering **National Memorial Arch** and serene **Washington Memorial Chapel**, gaining insight into daily life during the Revolutionary War. The park offers an interactive visitor center, hiking and biking trails, and guided trolley tours.



Trolley Tours

The rolling hills of the **Brandywine Battlefield Park** commemorate the Battle of Brandywine, featuring a replica of General George Washington's headquarters and annual living-history battle reenactments staged on the storied landscape.



Brandywine Battlefield Park



Bryn Athyn Historic District

HISTORY

The **Bryn Athyn Historic District**, a National Historic Landmark District, hosts a collection of arts, culture, and architecture. It includes four properties associated with the Pitcairn family: the Glencairn Museum, Cairncrest, Cairnwood Estate, and the Bryn Athyn Cathedral. The **Glencairn Museum**, once the early 20th-century home of Raymond and Mildred Pitcairn, features stunning collections of sacred art, stained glass, and medieval-inspired architecture. **Cairnwood Estate**, an 1895 Beaux-Arts estate designed by Carrère and Hastings for John Pitcairn, exemplifies Gilded Age elegance with formal gardens and grand interiors. The monumental **Bryn Athyn Cathedral** is renowned for its intricate stonework and Gothic-style architecture, serving as a spiritual and cultural centerpiece of the Swedenborgian church.

Art history in The Countryside is preserved by the works of three generations of Wyeth family artists and Wharton Esherick, known as the Dean of American Craftsmen. Visitors can view their works, tour their studios, and roam the landscapes that inspired them at the **Brandywine Museum of Art** and the **Wharton Esherick Museum**. New to the Brandywine Museum of Art, the N.C. Wyeth Mural Experience showcases the artist's largest work, *Apotheosis of the Family*, a 60-ft mural displayed in a custom round barn on his nephew Jamie Wyeth's personal estate.



Glencairn Museum



Wharton Esherick Museum



King of Prussia Mall

SHOPPING



Downtown West Chester

Explore distinctive shopping destinations throughout The Countryside of Philadelphia: clothing and shoes are always tax-free! **King of Prussia Mall**—the largest retail complex on the U.S. East Coast—features over 450 stores, and an impressive collection of luxury retailers (including Cartier, Gucci, and Louis Vuitton).

An exciting new addition to the mall, **Netflix House** invites visitors to step inside the worlds of fan-favorite shows through immersive experiences. The attraction features a *Wednesday*-themed carnival, VR games, mini-golf inspired by shows like *Stranger Things* and *Squid Game*, theater screenings, and more celebrations of hit Netflix series.



Suburban Square

The nearby **Philadelphia Premium Outlets** is a vibrant open-air town center with 150 name brand outlet stores offering 25-65 percent savings. A variety of dining options throughout the complex provide the perfect reprieve for lunch or dinner during your shopping spree. More outdoor shopping can be found at **Suburban Square**, a lively town center offering a curated mix of name brands, local boutiques, and delicious eats.

For boutiques, art galleries, and eclectic shops, visitors can stroll through The Countryside’s vibrant towns and villages. From West Chester, Kennett Square, and Phoenixville to Ambler, Ardmore, Conshohocken, and Skippack Village, each town offers a unique local charm.

NEW



Netflix House Philadelphia



Northbrook Canoe

OUTDOOR ADVENTURES

Natural trails and expansive preserves define The Countryside's landscape. The 18,000-square-foot **John James Audubon Center**, the historic home of America's most celebrated ornithologist, honors birds and natural preservation. Visitors can explore 175 acres of outdoor trails, meandering through forests, meadows, and wetlands while observing wildlife and learning about conservation at the visitor center.

Spacious parks abound throughout The Countryside. While expansive hiking and biking trails connect the monuments of **Valley Forge National Historical Park**, the 535-acre lake at **Marsh Creek State Park** makes it a favorite for sailing, kayaking, fishing, and wildlife watching. **Green Lane Park** features tranquil paths and open green space ideal for picnics or leisurely walks.

Northbrook Canoe offers scenic canoe trips down the Brandywine River; the special Canoe & Dine experience concludes the journey with a riverside picnic, live music and a bonfire.

Golf enthusiasts can tee off at a collection of beautifully maintained **Golf Courses**, set against rolling Countryside backdrops that feel like an extension of the greens.



John James Audubon Center



Philadelphia Cricket Club



Elmwood Park Zoo



Downtown West Chester

CULINARY

Savor your way through a range of memorable culinary experiences rooted in local tradition and artisan craftsmanship. A delicious collection of restaurants ranging from fine-dining to farm-to-table line The Countryside.

Located in the King of Prussia Mall, **Eataly** is a vibrant Italian emporium offering authentic cuisine, imported delicacies, and old-world culinary experiences, from pasta-making to wine tastings. Taste artisanal products and learn about their origins, dine in the restaurant, and shop made-in-Italy ingredients to bring home.



Eataly

Kennett Square is known as the **Mushroom Capital of the World**, producing over 60% of the nation's crop. Local chefs transform the yield into delicious creations: sampling a famed mushroom soup is a quintessential Countryside experience. Shop local products and learn about the growing process at **The Woodlands at Phillips Mushroom Farm** through educational exhibits that celebrate the region's mushroom heritage.



Corropolese Bakery

Beyond mushrooms, **Founding Farmers** specializes in locally-sourced, scratch-made American cuisine, honoring the region's agricultural roots with farm-to-table menus.

The Countryside is rich with local makers and producers. Satisfy your sweet tooth with confections from world-renowned and award-winning **Éclat Chocolate** and **Asher's Chocolate Co.** For a savory bite, tours of **Herr's Snack Factory** conclude with a sampling of the locally-loved potato chip.

More local favorites include **Corropolese Bakery** for their famed tomato pies, and **Gazzos Steaks** for authentic Philly Cheesesteaks.

Sample specialty cheeses and enjoy delicious shopping at **The Grand Fromage**, a charming Skippack Village shop with more than 100 domestic and international varieties. **Birchrun Hills Farm** offers a local selection of artisan cheeses, perfectly paired with regional wines and craft brews.



Mushroom Soup



Tannery Run Brew Works

CULINARY

Discover locally crafted libations, from vine to wine, hop to hazy, and grain to glass. The region’s buzzing craft beer and wine scene offers something for every palate—from brew-buffs to self-proclaimed sommeliers.

Breweries are bountiful throughout The Countryside, from world-renowned and locally-loved **Victory Brewing Company** to **Conshohocken Brewing Company** and **Tannery Run Brew Works**. Small-batch brewers and taprooms line the region’s downtowns, offering atmospheres and menus as unique as their brews.

Rolling vineyards produce distinctive local wines, showcased at wineries and tasting rooms throughout the region. **Wayvine Winery** features rural vineyard views at their Nottingham location, and a modern tasting room in downtown Kennett Square.

A’Dello Vineyard and Winery brings old world Italian winemaking traditions to The Countryside, while **Karamoor Estate & Vineyard** produces award-winning, French-style wines. **Chaddsford Winery** focuses on approachable, food-friendly wines and seasonal specialties, offering unique events and pairing experiences.

For craft cocktails, **Bluebird Distilling**, **Botanery Barn Distillery**, and **Boardroom Spirits** produce a range of local spirits— expertly mixed into flavorful, inventive drinks that highlight their unique distilling styles.



Victory Brewing Company



Wayvine Winery & Vineyard



Longwood Gardens' Festival of Fountains

Events, festivals, and seasonal experiences add a unique, cultural flair to tours of The Countryside of Philadelphia.

Excitement soars each summer during **Longwood Gardens' Festival of Fountains** and the **Chester County Hot Air Balloon Festival**, where hundreds of colorful hot air balloons fill the sky.

History is honored at annual "**March In**" and "**March Out**" events at **Valley Forge National Historical Park**, commemorating the 1777 arrival and 1778 departure of the Continental Army with living history demonstrations. The park offers a robust calendar of events and experiences honoring American history, including a **July 4th Celebration** featuring artillery demonstrations. Runners can participate in the park's annual **5-Mile Run** each Spring.

More living history can be found at the **Goschenhoppen Folk Festival**, showcasing 18th and 19th century Pennsylvania Dutch culture.

Equestrian events, like **The Devon Horse Show & Country Fair** and **Brandywine Polo Club** matches honor the region's rich equine traditions.

Car enthusiasts can view rare vintage rides at **L'oe Show** and the **Radnor Hunt Concours d'Elegance**.

Local musicians take stage at the **Philadelphia Folk Festival**—America's oldest 4-day outdoor music festival.

Each September, **The Kennett Square Mushroom Festival** celebrates the region's title of Mushroom Capital of the World with a vibrant street festival and growing exhibit in downtown Kennett Square.

During the holiday season, magnificent light displays glow at **Longwood Gardens** and the **Elmwood Park Zoo**, paired with cheery experiences and holiday markets throughout the region's main streets and town centers.

Philadelphia boasts its own vibrant calendar of events: enjoy an excursion for unique city experiences and retreat back to the tranquility of The Countryside.



Hot Air Balloon Festival



Brandywine Polo Club



Valley Forge March In | NPS



Inn at Whitewing Farm

SETTLE IN

Choose from a variety of convenient accommodations as a central hub for your Countryside adventure. Most lodging properties offer free parking.

NATIONAL BRANDS

Opt for modern atmospheres at brand hotels you know and trust. Enjoy convenient locations based on your itinerary, and easy access to and from Philadelphia.

DOWNTOWN PROPERTIES

Stay in the heart of it all: downtown lodging options offer walkability to shops, restaurants, and local lures.

BED & BREAKFASTS

Bed & breakfasts and historic inns add a unique countryside charm to your stay, from farmhouses to bookish mansions.



Artelo Hotel



Tru by Hilton Valley Forge

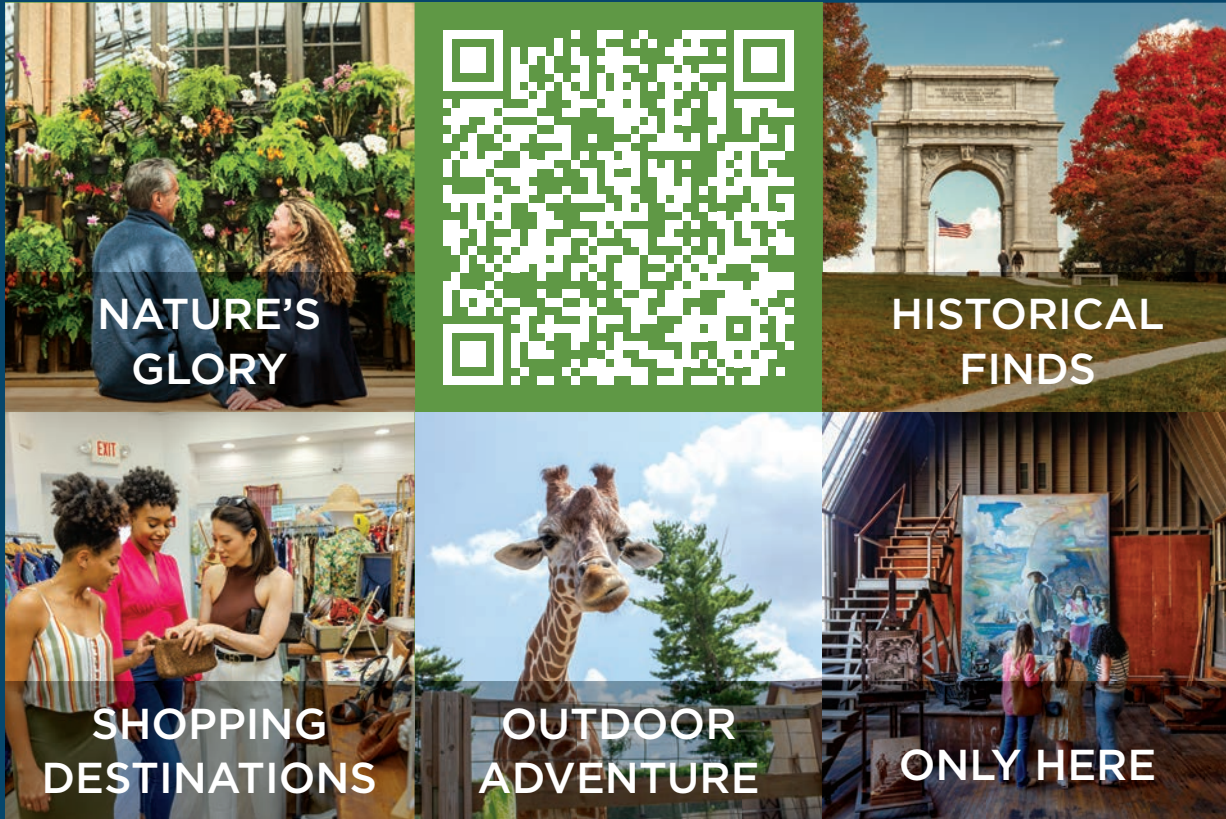


Hotel West & Main

ITINERARIES

Looking for more inspiration? Mix and match sample itineraries based on your interests at [CountrysidePHL.com/Itineraries](https://www.countrysidePHL.com/itineraries).

SCAN TO BROWSE ITINERARIES



CONTACT US

We look forward to hosting you in The Countryside of Philadelphia!

Contact the Sales Team for planning resources and more information.

Greg Edevane
Director of Global Development
greg@brandywinevalley.com
+1 484-840-7212

Lisa Karl
VP of Sales & Strategic Partnerships
karl@valleyforge.org
+1 610-834-7979

Scott Higgins
Director of Sales
shiggins@valleyforge.org
+1 610-834-7963

Visit [CountrysidePHL.com](https://www.countrysidePHL.com)
Updates, Itineraries, Sales Resources, Videos & More!

PENNSYLVANIA
THE GREAT AMERICAN GETAWAY


THE COUNTRYSIDE OF PHILADELPHIA
[CountrysidePHL.com](https://www.countrysidePHL.com)